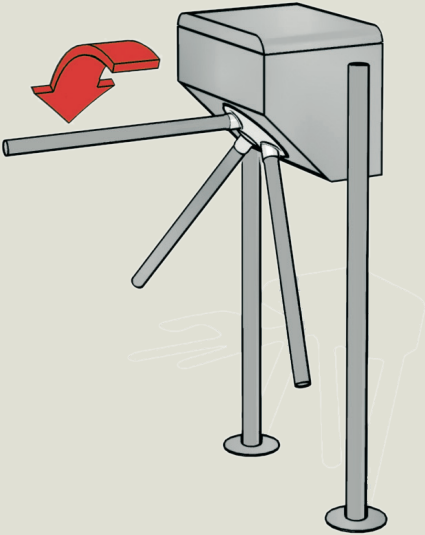


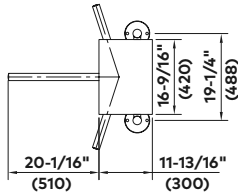
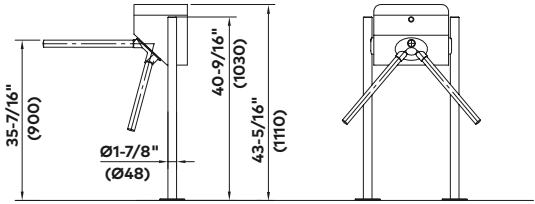
TPB-S03

Tripod turnstiles

Standard units	TPB-S03
Construction	Housing with base column and flange plate.
Housing material	Aluminium.
Base column, base or flange plate material	AISI 304 stainless steel.
Crossbar material	AISI 304 stainless steel.
Finish	Stainless steel satin finish. Aluminium housing painted in RAL 9006.
Function	Power assist—Power-assisted motion; servo-positioning drive/ electronically controlled in both directions behavior in event of power failure can be selected for each direction: free or blocked).
Electrical equipment	Control system integrated in the unit.
Power supply	110 – 230 VAC, 50/60 Hz, 253 VA.
Standby power consumption	10 VA.
Installation	Finished floor
	Suitable for outdoor installation.
Protection classes	Housing IP33, components conducting supply voltage IP43.



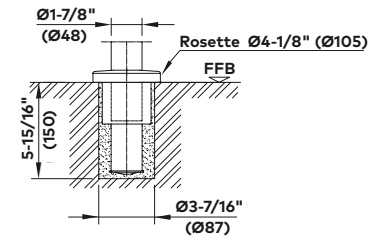
TPB-S03 elevation drawings



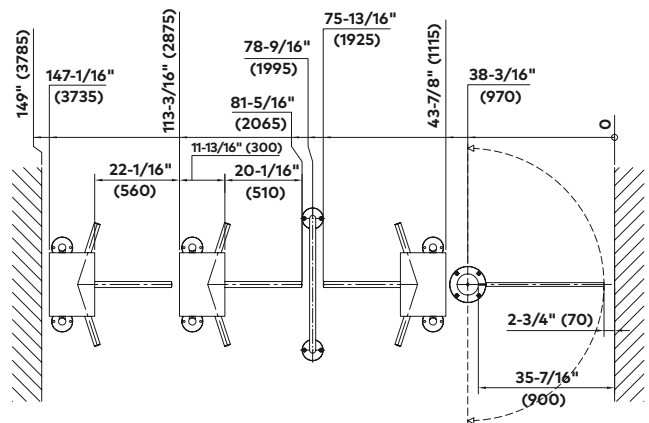
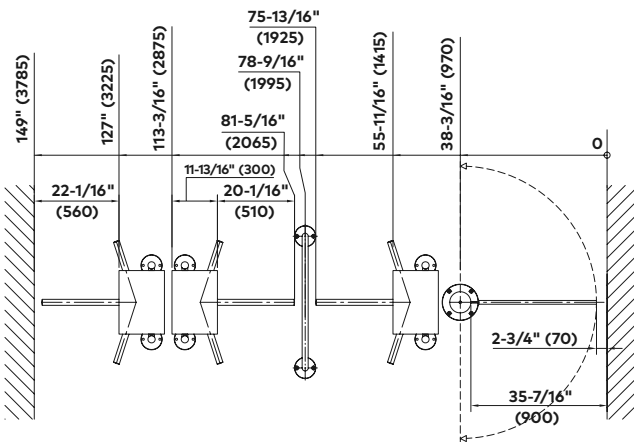
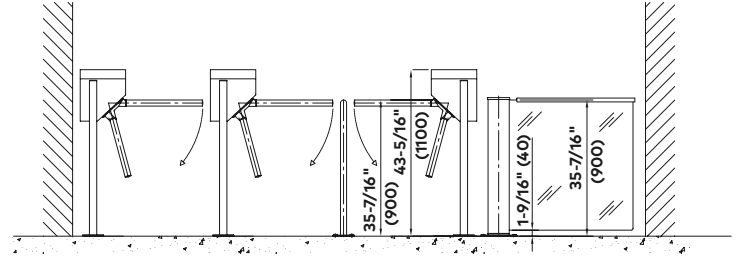
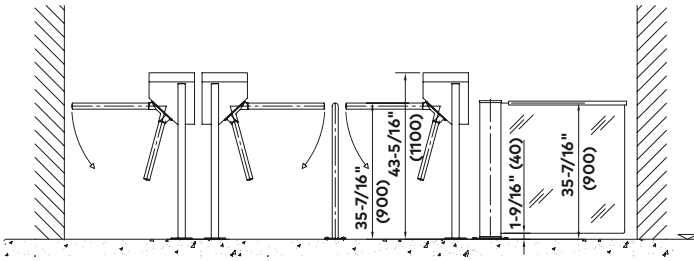
Note
Dimensions are shown as inches followed by millimeters; for example, 1" (25).

TPB-S03

Installation drawings



Cast-in



Options

Function

- Counter.
- Collapsible bars.

Electrical equipment

- Operating panels and frames or surface mount housing.
- Various signal devices.

Installation

- Pallet with stainless steel ramp and rubber covering, approx. 3' 3-5/16" x 4' 11-1/16" (1.0 m x 1.5 m), height approx. 1-1/4" (32 mm).
- With cast-in clamping sleeves and rosettes for structural floor level.

o optional



OPL 05 operating panel.



Signal device LED arrow-cross (installed in the housing or in the cover plate on both sides).

